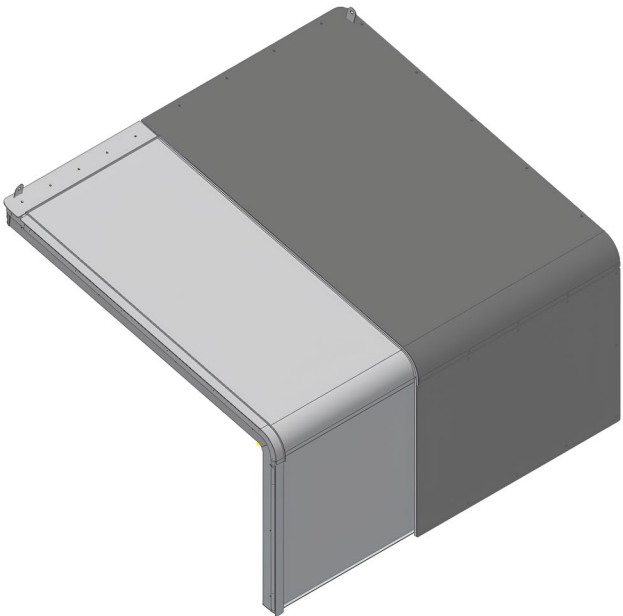


# Companionway 2537.07



model	A (mm/ inch)	B (mm/ inch)	C (mm/ inch)	D (mm/ inch)	R (mm/ inch)	R1 (mm/ inch)	L (mm/ inch)	Le (mm/ inch)	H (mm/ inch)	He (mm/ inch)	S (mm/ inch)	α	opening	weather proof ISO 12216:2004
2537/07	695 27 <sup>3</sup> / <sub>16</sub>	1310 51 <sup>3</sup> / <sub>5</sub>	1420 56"	695 27 <sup>3</sup> / <sub>16</sub>	115 4 <sup>1</sup> / <sub>2</sub>	25 1 <sup>1</sup> / <sub>16</sub> "	1740 68 <sup>1</sup> / <sub>2</sub>	1800 70 <sup>9</sup> / <sub>16</sub>	1005 39 <sup>3</sup> / <sub>5</sub>	1180 46 <sup>3</sup> / <sub>5</sub>	90 3 <sup>1</sup> / <sub>2</sub>	104°	Sx→Dx	CAT 4

Sliding single-wing automatic companionway.

The companionways are subject to quality control tests to comply with ISO 12216.2004 standards.

NOTE: Sx→Dx, Sx←Dx  
The sliding doors opening direction is always considered from the outside of the boat.

